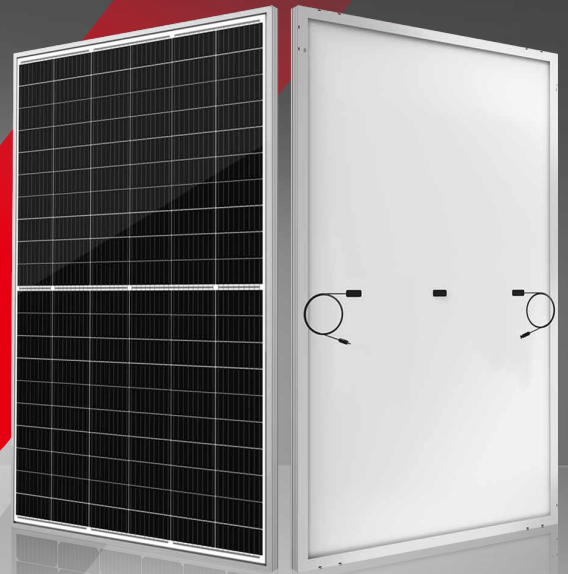


SII SERIES

Multiple upgrades were forged into one







330-345w



● SII SERIES

Seraphim redefined the high-efficiency module series by integrating 158.75mm silicon wafers with multi-busbar and half-cut cell technologies. Seraphim panel combined creative technology effectively and extremely improved the module efficiency and power output.

● KEY FEATURES

-  Less mismatch to get more power
-  Less power loss by minimizing the shading impact
-  Competitive low light performance
-  3 times EL test to ensure best quality
-  Ideal choice for utility and commercial scale projects by reduced BOS and improve ROI.
-  Outstanding reliability proven by PVEL for stringent environment condition :
 - sand, acid, and alkali, hail stones,
 - 2400pa wind load and 5400pa snow load.
 - Anti-PID

● QUALITY SYSTEM

ISO19001 / ISO14001 / OHSAS18001

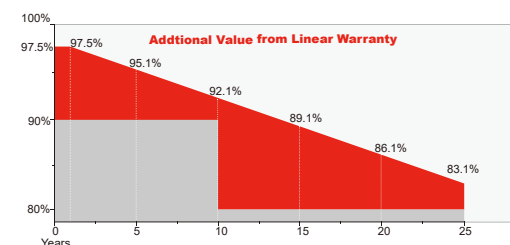
● PRODUCT CERTIFICATION



● INSURANCE



● WARRANTY



Guarantee on product material and workmanship



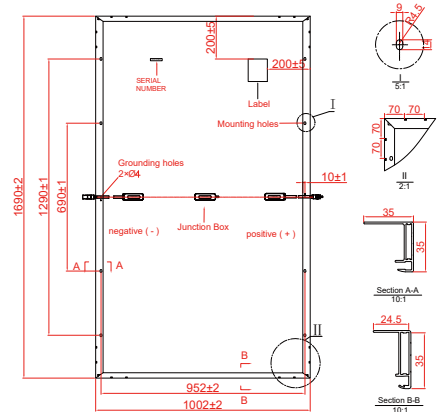
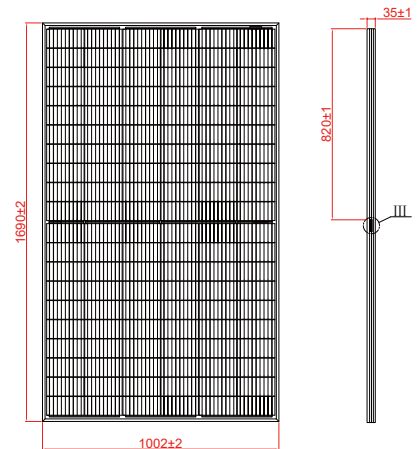
linear power output warranty



Electrical Characteristics

Module Type	SRP-330-BMB-HV	SRP-335-BMB-HV	SRP-340-BMB-HV	SRP-345-BMB-HV
	STC	STC	STC	STC
Maximum Power at STC (Pmp)	330	335	340	345
Open Circuit Voltage (Voc)	40.8	41.0	41.1	41.3
Short Circuit Current (Isc)	10.11	10.20	10.32	10.42
Maximum Power Voltage (Vmp)	34.4	34.6	34.7	34.9
Maximum Power Current (Imp)	9.60	9.69	9.80	9.89
Module Efficiency at STC(η_m)	19.49	19.78	20.08	20.37
Power Tolerance	(0,+4.99)			
Maximum System Voltage	1500 VDC			
Maximum Series Fuse Rating	20A			

STC: Irradiance 1000 W/m² module temperature 25°C AM=1.5;



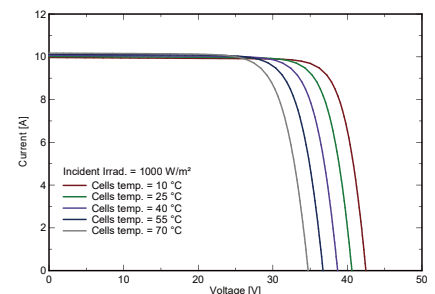
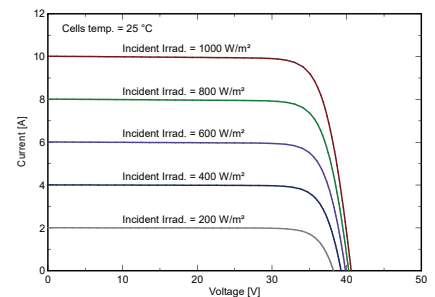
Temperature Characteristics

Pmax Temperature Coefficient	-0.36 %/°C
Voc Temperature Coefficient	-0.28 %/°C
Isc Temperature Coefficient	+0.05 %/°C
Operating Temperature	-40 ~ +85 °C
Nominal Operating Cell Temperature (NOCT)	45±2 °C

Mechanical Specifications

External Dimensions	1690 x 1002 x 35 mm
Weight	19.0kg
Solar Cells	PERC Mono(120pcs)
Front Glass	3.2 mm AR coating tempered glass, low iron
Frame	Anodized aluminium alloy
Junction Box	IP68, 3 diodes
Output Cable	4.0 mm ² , Portrait:255mm(+)/355mm(-);Landscape:1200mm
Mechanical Load	Front side 5400Pa/ Back side 2400Pa

I-V Curve



Packing Configuration

	1690 x 1002 x 35 mm	
Container	20'GP	40'HQ
Pieces per Pallet	31	31+2*
Pallets per Container	12	26
Pieces per Container	372	858

* 31+2 pieces per pallet is the special package which only suits for container transport. For details, please consult SERAPHIM.

